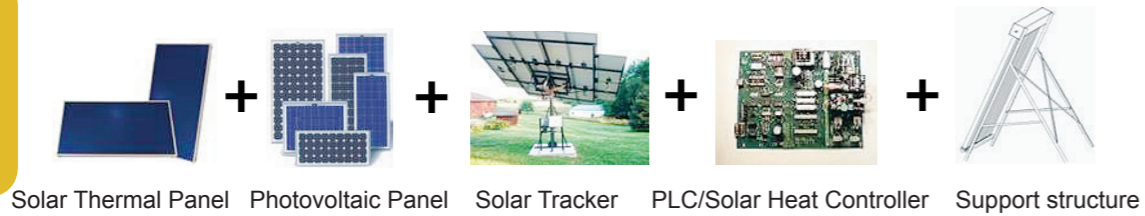


Install the Next Generation Solar Energy

and ensure your investment keeps pace with solar technology development

Combines PV and solar thermal into one system



You only need one system for heat and electricity!

- 1) Create a safe energy supply by reducing the dependence on fossil fuels. Generate your own **hot water** supply and your own **electricity**.
- 2) **Easy to upgrade with latest solar cells** as technology develops.
- 3) High value solar energy system. With 75°C output temperature and improved system design, we lower the total cost of rooftop projects. The X10 is eligible for most government subsidies
- 4) Same output as conventional PV panels + 4 times the energy as hot water

ABSOLICON
SOLAR CONCENTRATOR



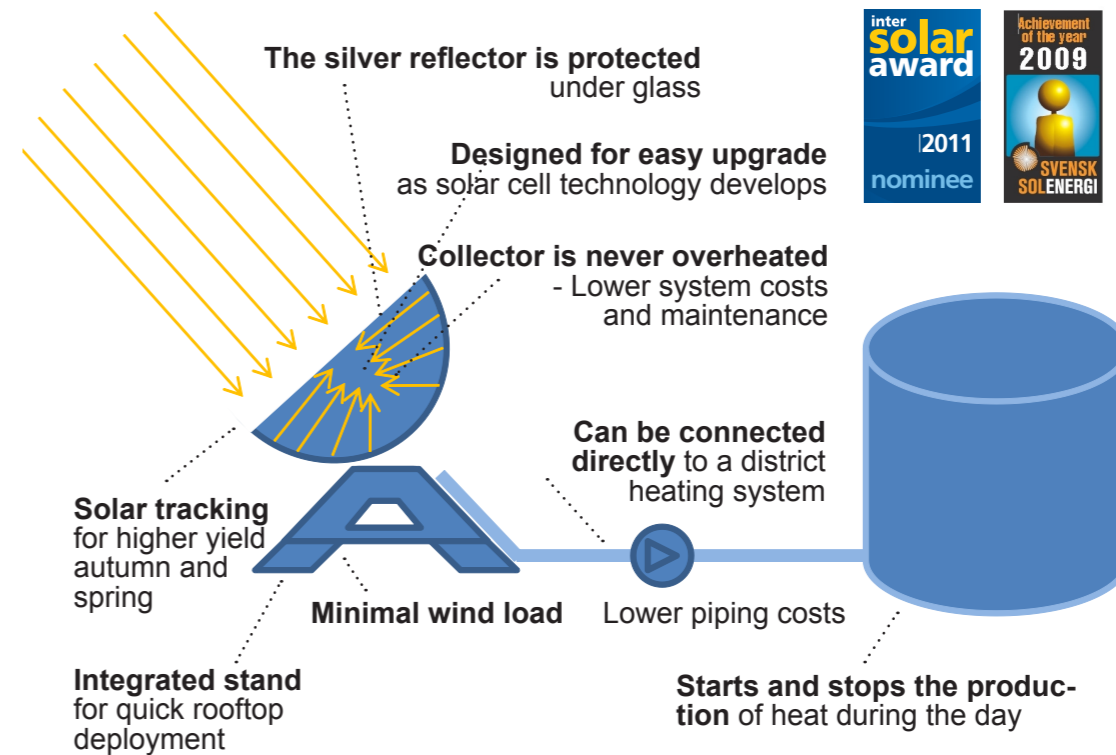
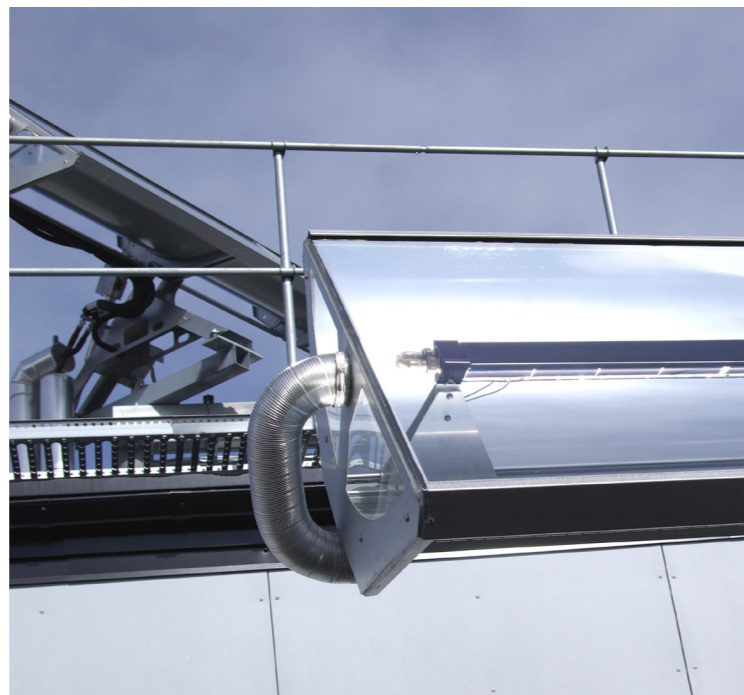
Copyright © 2011

Absolicon Solar Concentrator AB
Matroskatan 5
87133 Hårnösand
SWEDEN
info@absolicon.com

Always follows the sun

Important advantages with tracking:

- Higher yield
- Less dirt on glass thanks to the movement
- Vertical stow mode makes dirt and snow fall off.
- Can easily pause the energy production during the day
- Sustains any storm in wind safe position



Absolicon X10 - solar energy for large buildings

The Absolicon X10 is designed for large buildings with central heating such as hotels, hospitals, industries and apartment buildings. Compared to traditional solar thermal systems, we provide a complete system for large installations with less piping and better control over the production.



Durable and reliable

One of a kind

The X10 initiates a new era in solar energy. The simultaneous generation of electricity and heat makes our product one of a kind!

Certified

The X10 is ISO 9001 certified, tested by SP and has the CE mark.

Active temperature control reduces maintenance and increase the lifetime of the thermal fluid.

Robust

The X10 is weather- and wind tested and is constructed with materials with proven track-records in tough environments.

Reliable

25 years limited electricity production guarantee. Durability tested and approved according to the Solar Keymark standard.

Environmentally friendly

Life cycle analysis shows that the X10 has four times less environmental impact than ordinary solar cell panels.

Offer

We make a feasibility study of your installation!



Questions?

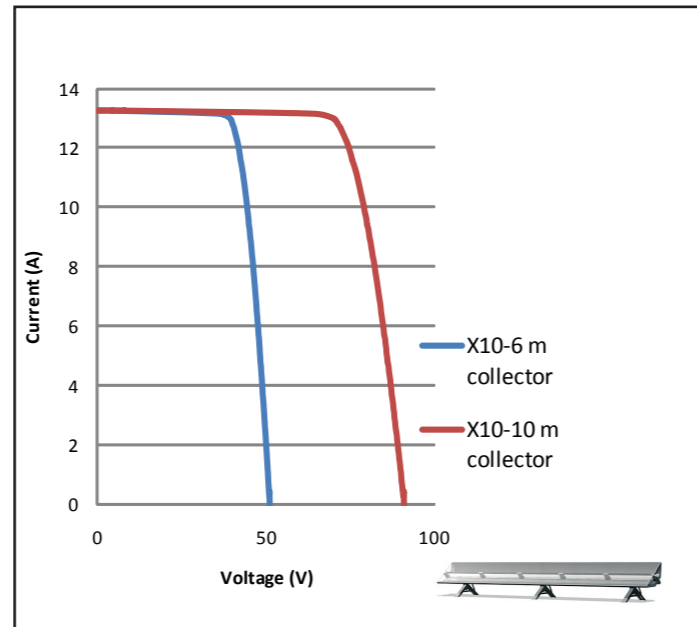
Call us:
+46-611-55 70 00

Technical data

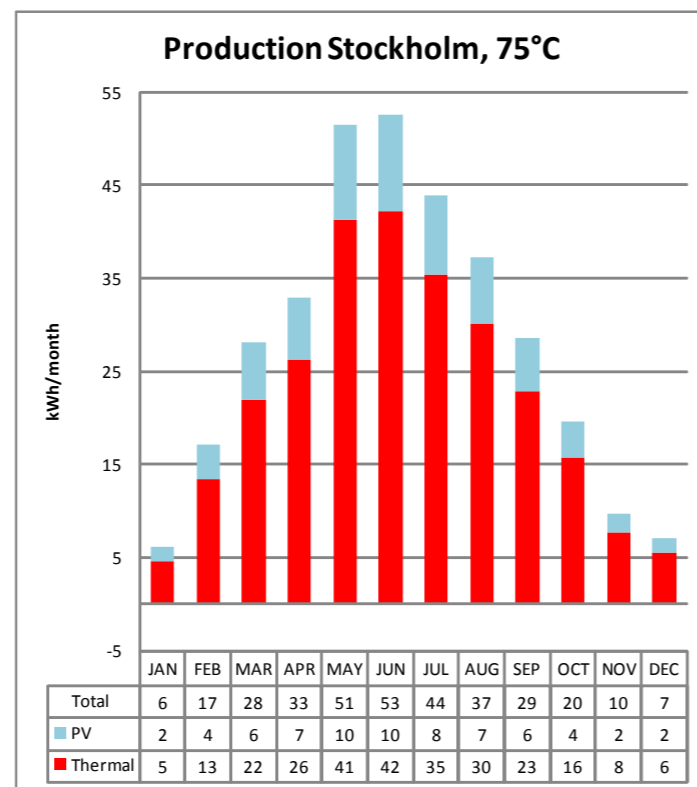
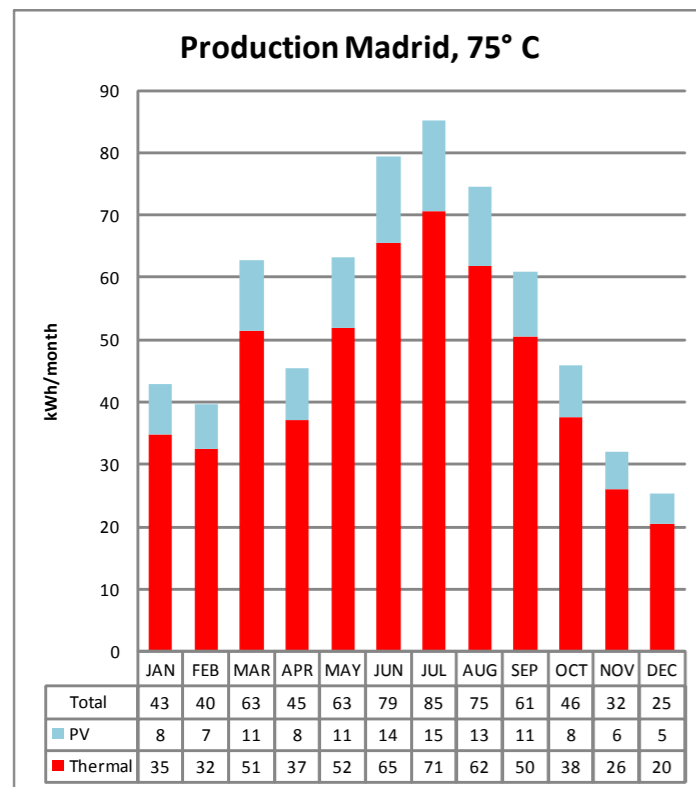
Model X10 PV/T	6 m	10 m
Collector length (m)	6	10
Collector width (m)	1,1	1,1
Aperture	6,2	10,4
Weight (kg)	195	315
Number of legs (ea.)	2	3
Heat (80%) and electricity (20%)		
Annual energy prod. Madrid kWh at 50°C	4073	6832
Liquid in Absolicon X10 (litres)	4,4	6,7
Recommended flow (litres/min)	10	10
Electricity*		
Electrical Power P_{MPP} (W)	600	1000
Shortcut current I_{SC} (A)	13	13
Voltage V_{OC} (V)	51	91
Current I_{MPP} (A)	12,5	12,5
Voltage V_{MPP} (V)	48	80
Voltage drop (%/°C)	0,4	0,4
Area for electricity production (m ²)	0,35	0,58

* Electrical data are valid for standardized test conditions (25°C and 1000 W/m²)

Absolicon X10 IV-curves



X10 PV/T



Contact Absolicon to get accurate production data for any location.



Absolicon Solar Concentrator AB • Matrosgatan 5 • 871 33 Härnösand • SWEDEN
 Phone +46-611-55 70 00 • Fax: +46-611-557210 • VAT: SE556729018301 • Bank: Handelsbanken
 E.mail: info@absolicon.com • Web: www.absolicon.com

Smarter energy

Replace electricity and fuel with concentrated solar energy

