

T160

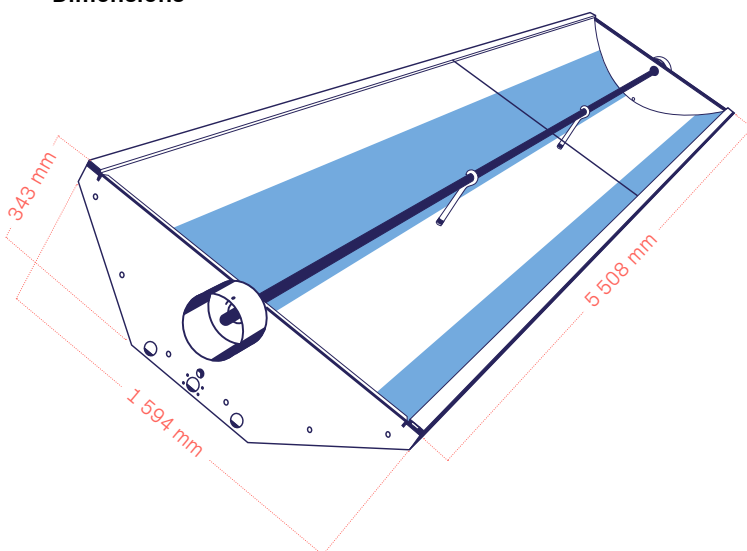
SOLAR COLLECTOR

Absolicon T160 is a medium-sized parabolic concentrator for heat up to 160 °C & steam up to 8 bar.

Absolicon T160 Solar collector is the first of its kind to be certified by Solar Keymark and has the highest optical efficiency ever achieved for a small parabolic trough. Each world-class component of the patented technology contributes to the total record-high performance.

Absolicon T160 has excellent durability, allowing the collectors to be delivered with 25 years lifetime and a 5-year year hardware warranty.

Collector Type	Glass-covered parabolic trough collector with one-axis tracking
Recommended Heat Transfer Fluid	Water, Propylene Glycol (max 40%)
Volume of Heat Transfer Fluid	2.2 liter
Operational Temperature	60 - 160 °C
Stagnation Temperature	460 °C
Maximum Operating Pressure	8 bar
Receiver	Stainless steel, optically selective coating
Glass	4 mm hardened glass, antireflective coating
Reflector	Polymer embedded silver on steel sheet
Weight	148 kg
Dimensions	



Solar Keymark Certification

The Solar Keymark certification is proof of the reliability and high quality of the product.

SolarImpulse Label

Solar Impulse Efficient Solution is awarded to companies and technology that protect the environment in a profitable way.

Performance test summary

Test Method	Quasi Dynamic
Collector aperture area	5.5 m ²

Performance Parameters (based on aperture area)

η_0	0.766
a_1	0.368 W/m ² °C
a_2	0.00322 W/m ² °C
K_d	0.0859

Incidence angle modifier in east-west orientation

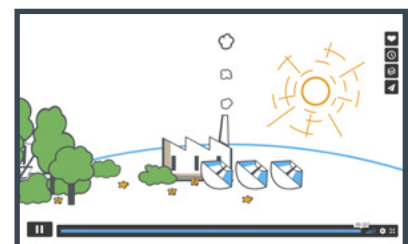
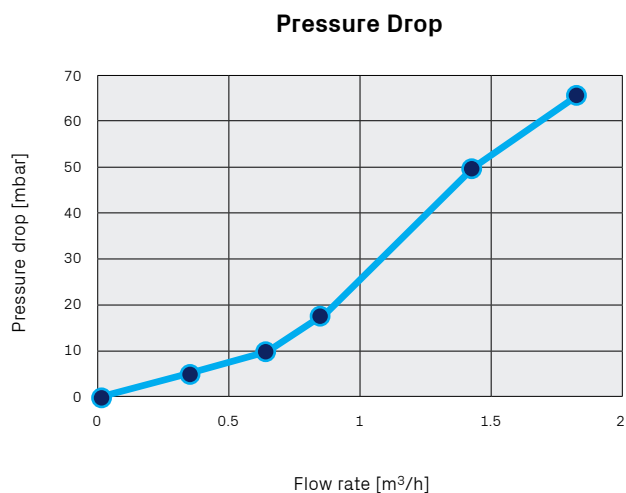
θ	10	20	30	40	50	60	70	80	90
$K_b(0,\theta)$	0.99	0.99	0.98	0.96	0.91	0.77	0.53	0.18	0

Pressure drop properties

Test Method	ISO 9806:2013, clause 28
Ambient temperature	15 ± 2 °C
Fluid temperature	20 ± 0.5 °C

Collector pressure drop

Flow rate [m ³ /h]	0.0	0.3	0.6	0.8	1.4	1.8
Pressure drop [mbar]	0.0	4	9	16	40	63



VIDEO: HOW T160 COLLECTOR WORKS

Learn more about T160 solar collector
www.absolicon.com